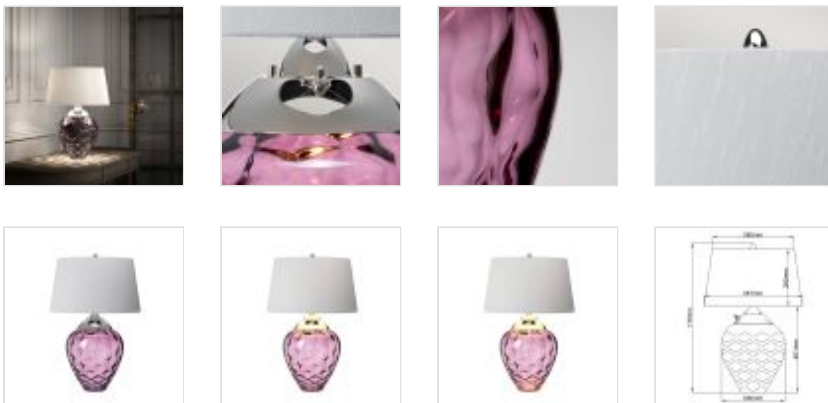


QN-SAMARA-TL-PLM

Samara Table Lamp - Plum - Polished Nickel

DETAILS

FITTING HEIGHT	715mm
GUARANTEE	General 2 Year Guarantee
FITTING HEIGHT	715mm
GUARANTEE	General 2 Year Guarantee



PRODUCT DETAILS

Samara's Plum textured blown glass, classic polished nickel metal-work and beautiful hand-made fabric shades combine to form an arresting and gorgeous table-lamp. Combined with a 4-way switch, this design features independent light sources for the shade and the glass. (GU10 supplied in the base). Titanium silver faux silk shade ref LSUK004.



Quintiesse
(Part of Elstead Lighting Group)
Elstead House
Mill Lane
Alton, GU34 2QJ,
United Kingdom

Phone
+44 (0) 1420 82377

Email
enquiries@quintiesse.com