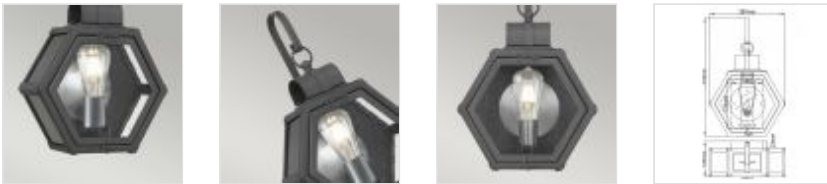


**QN-HEATH-S-MB**

Heath 1 Light Small Wall Lantern - Mottled Black

**DETAILS**

|                         |                                 |
|-------------------------|---------------------------------|
| <b>WIDTH</b>            | 267mm                           |
| <b>FITTING HEIGHT</b>   | 418mm                           |
| <b>PROJECTION/DEPTH</b> | 125mm                           |
| <b>GUARANTEE</b>        | 3 Year Anti Corrosion Guarantee |
| <b>WIDTH</b>            | 267mm                           |
| <b>FITTING HEIGHT</b>   | 418mm                           |
| <b>PROJECTION/DEPTH</b> | 125mm                           |
| <b>GUARANTEE</b>        | 3 Year Anti Corrosion Guarantee |

**PRODUCT DETAILS**

Meet hexagonal, handsome Heath. This visually intriguing suspended lantern features an aluminum and clear seeded glass cage; a domed roof and curved arm complete this interesting two-piece construction. Finished in Mottled Black, Heath exudes charm and would be a great addition to a rustic setting. IP44 rated.